



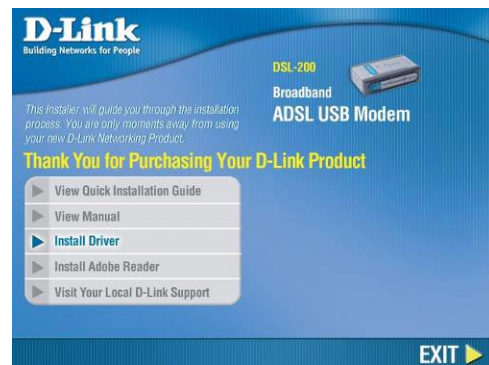
Installation procedure for D-Link modem on Windows operating systems (excluding Windows Vista)

Please complete the following procedure for the Installation of all D-Link Modems (version C1 only) on Windows operating systems (**excluding** Windows Vista). For best results, the modem must **not** be plugged to the computer during installation:

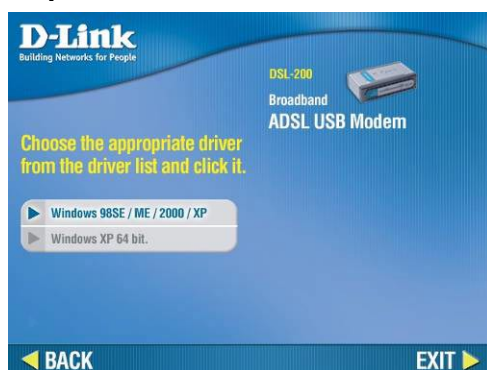
Step 1 Insert disk



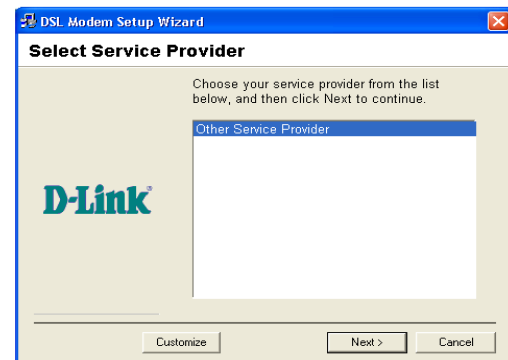
Step 2 Click on 'Install Driver'



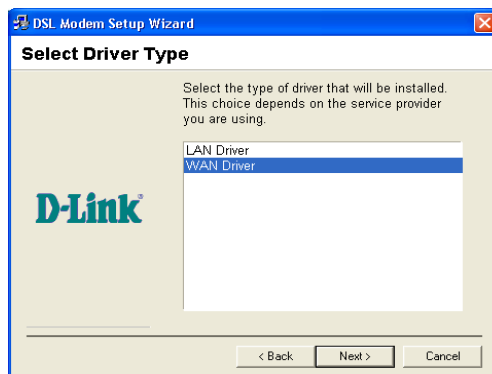
Step 3 Select 'Windows 98SE/ME/2000/XP'



Step 4 Click on 'Next'



Step 5 Select 'WAN' driver and then click 'Next'



Step 6 Ensure that 'VPI' and 'VCI' are '0' and '38' respectively. All other settings should be as default. Click 'Next'

